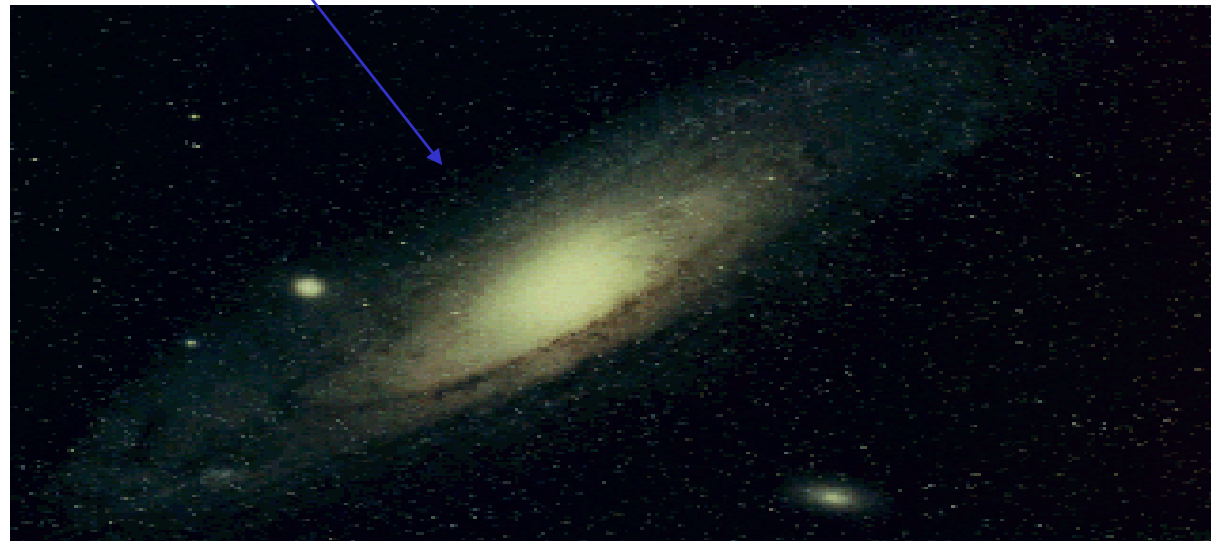


ORDINI DI GRANDEZZA

Ordini di grandezza: distanze

dimensioni dell' Universo: $\cong 10^{10}$ anni-luce ($\cong 10^{26}$ m)

distanza della galassia più vicina (**Andromeda**, M31): $\cong 2.5 \cdot 10^6$ a.-l.



dimensioni della nostra galassia

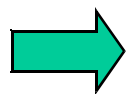
(**Via Lattea**, simile ad Andromeda): $\cong 1.6 \cdot 10^5$ a.-l.

Ordini di grandezza: distanze

dimensioni del
sistema solare :

$\cong 10^{10}$ Km

$\cong 10$ ore-luce

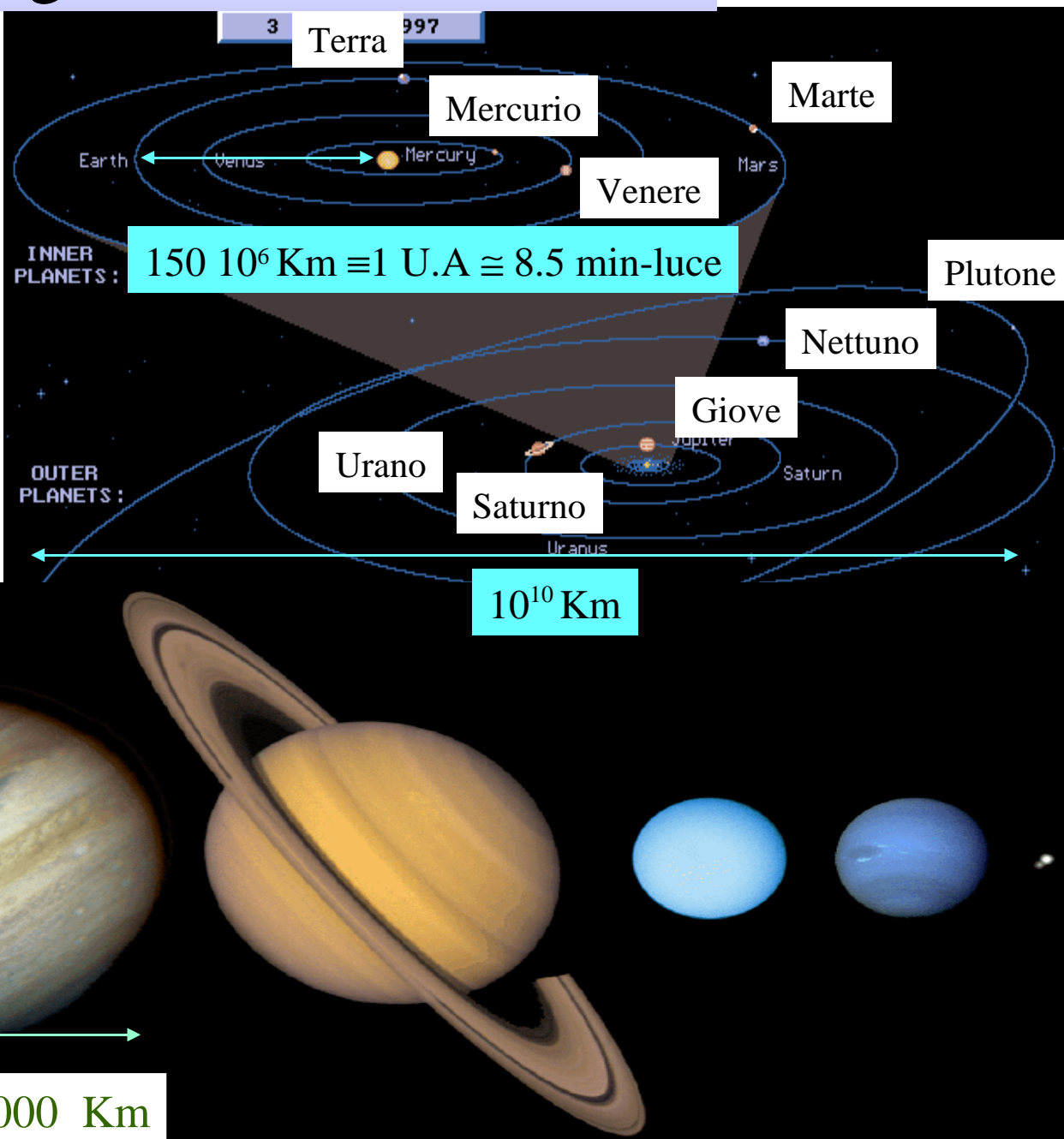


Diametro del:

Sole: $1,4 \cdot 10^6$ Km

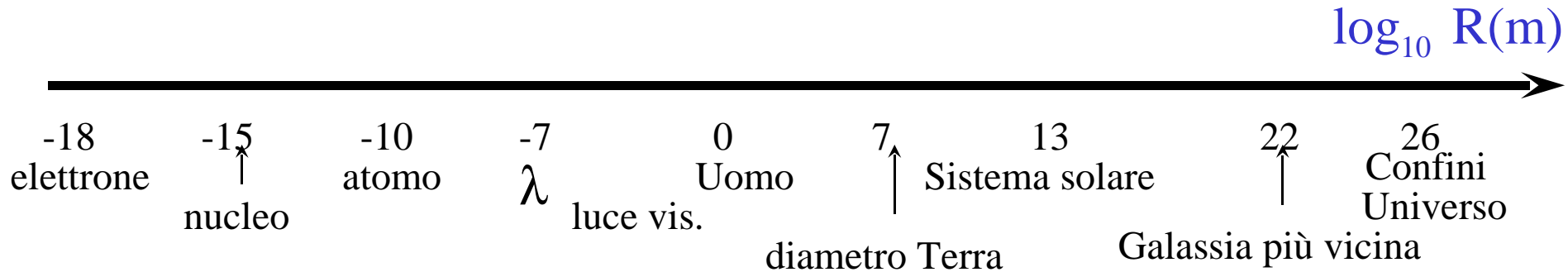
Terra : 12 740 Km

Giove: 140 000 Km

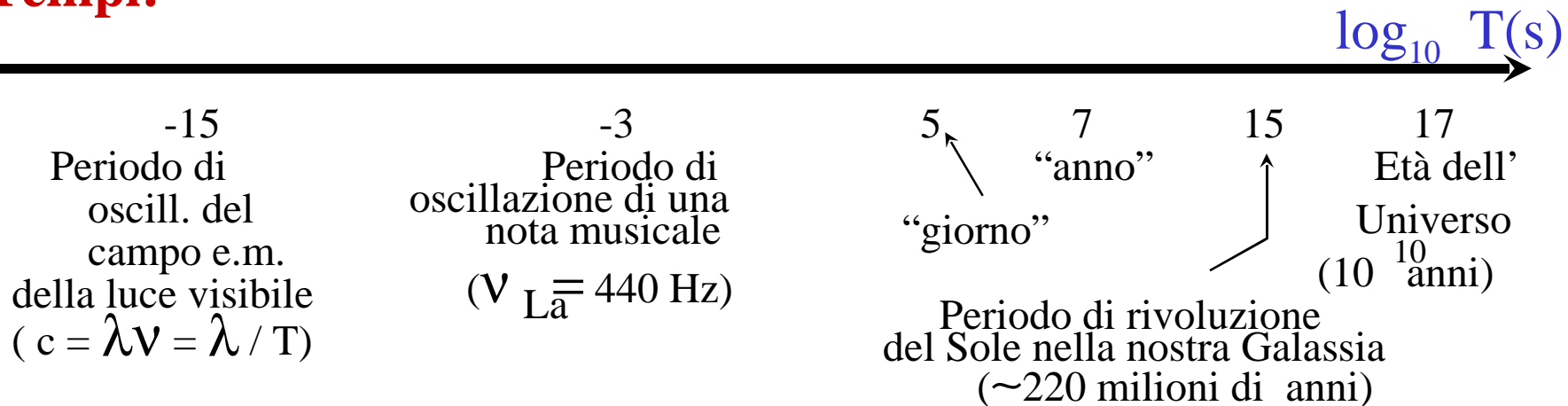


Ordini di grandezza: distanze, tempi, masse

Distanze:



Tempi:



Masse :

